

## **2024 POMPANO BEACH SEAFOOD FESTIVAL**

POMPANO BEACH COMMUNITY PARK

APRIL 20-21, 2024

ARTS/CRAFTS VENDOR INFORMATION (Non-Food)

### **FESTIVAL HOURS**

Saturday, April 20<sup>th</sup> 11:00 AM – 10:00 PM

Sunday, April 21<sup>st</sup> 11:00 AM – 7:00 PM

\*Tickets sales will stop one hour prior to closure (9 PM on Sat. & 6 PM on Sun.) Upon closing ticket sales, spaces adjoining our entrance (E-01 – E19) will close for the evening and crowds will exit on N.E. 8<sup>th</sup> St. to festival parking.

### **VENDOR SET-UP**

Vendor set-up is on Friday (April 19<sup>th</sup>) from 8 AM – 6 PM, vendors may drive up to their spaces to unload. Thursday setup is available by request, please email [kyle@pompanobeachseafoodfestival.com](mailto:kyle@pompanobeachseafoodfestival.com) to request a Thursday setup.

**SET UP HOURS:**                      **Friday, April 19<sup>th</sup>            8:00 AM – 6:00 PM**

**CHECK-IN AND STAGING**      Vendor check-in will be at the corner of N.E. 18<sup>th</sup> Avenue and N.E. 8<sup>th</sup> Street. Festival Volunteers will coordinate your entrance to the grounds and provide you with wristbands for you and your staff at the festival. Vendor wristbands must be worn at all times during the event. There are no exceptions to this policy.

Once cleared to set-up, you will be issued a vehicle access pass to allow access onto the grounds. You will be able to drive directly to your booth, there may be a short wait depending on access when you arrive.

We ask that vendors be considerate of others and try to offload materials and secure a parking space prior to setting up your booth. There is plenty of free and convenient parking available just a few steps away from our vendor areas within Community Park.

### **VEHICLE ACCESS SAT. & SUN. :**

Vehicles will be allowed access inside festival grounds on Saturday and Sunday mornings between 8:00 am – 9:30 am only. All Vehicles must be outside of festival grounds by 9:30 AM Saturday & Sunday morning, this will be strictly enforced by the Sheriffs Office and our security team. Free and convenient Parking is available just a few steps away in Community Park.

**\*Vehicles will not be allowed to park within the festival grounds under any circumstances, small cargo trailers are permitted.**

**PARKING** We will be offering free parking this year for all vendors and attendees. Free parking is available at community Park off N.E. 10<sup>th</sup> St., the North East corner of Pompano Park near the tennis and pickleball courts. Signs will help guide you.

### **TENTS & ELECTRIC**

Tents are not included with vendor display spaces, rentals are available through Elite Tent Company at an additional cost. Elite Tent Company handles tent/table rentals and can be reached at (954) 987-7908.

Electric is not available, small quiet generators are permitted. Many vendors use battery packs to support lights and basic usb charging.

### **VENDOR SPACES (Non-Food)**

Vendor spaces for the most part are 12' wide x 15' deep. However, with a circular layout-spaces are not perfect rectangles and the dimensions will vary, but we ensure that you will have enough room for a 10' x 10' tent in your space. Rounded spaces tend to have more frontage and less depth. Exhibitors may not put product stands in the aisle or solicit customers by standing in the aisle.

### **BREAKDOWN-**

**Breakdown for booths #001 - #121:** Vehicle access for breakdown begins after the festival closes on Sunday and the public has vacated the event, generally around 7:30 PM.

No vehicles will be allowed into the event until Staff & Sheriff's Office approval is given after closing. This is for everyone's safety

Vendor vehicle inflow for breakdown will be along the tennis courts in Community Park (off N.E. 10<sup>th</sup> st. – follow signs for band parking) and outflow will be through N.E. 8<sup>th</sup> St. (Vehicles will not be permitted in through N.E. 8<sup>th</sup> St.)

**Breakdown for booths E-01 – E-19:** Vehicle access for these booths adjoining our entrance will begin at 6:30 PM.

**All vendor spaces must be fully broken down by 12 PM (noon) on Monday**

**SALES TAX** You are required to pay Florida Sales Tax. Representatives of the Dept. of Revenue may be on hand. If you do not have a Florida Sales tax # you must download a reporting form and pay the tax.

**SECURITY-** Broward Sheriff Deputies and Private Security will be on hand to provide both day and night security. We do not however, assume responsibility for anything lost or stolen. We

have had very little theft problems over the years but please use common sense to protect your valuables.

**VENDOR ACCESS**- Vendors with **wristbands on their wrist** will be allowed through festival gates starting at 8am on Saturday and Sunday. To reduce theft, vehicles will not be allowed access on festival grounds after closing Saturday night, and we will evacuate all attendees and exhibitors at 10PM upon closing.

**FESTIVAL OFFICE**- If you have questions or concerns during the event, please see a member of our security team or visit our office which is located inside the Emma Lou Olson Civic Center at N.E. 6<sup>th</sup> St. & N.E. 18<sup>th</sup> ave.

**EVENING HOURS**- The festival will be open Saturday Evening until 10:00 PM. There will be light towers to illuminate vendor areas. We recommend some type of battery operated lighting for your booth. The park does not have electricity available, but you may use a small generator as long as it meets codes and is not disturbing to other vendors.

Any Questions? You may reach Kyle at 954-592-9606 or by email, [Kyle@pompanobeachseafoodfestival.com](mailto:Kyle@pompanobeachseafoodfestival.com)

\*Email is the best way to reach me

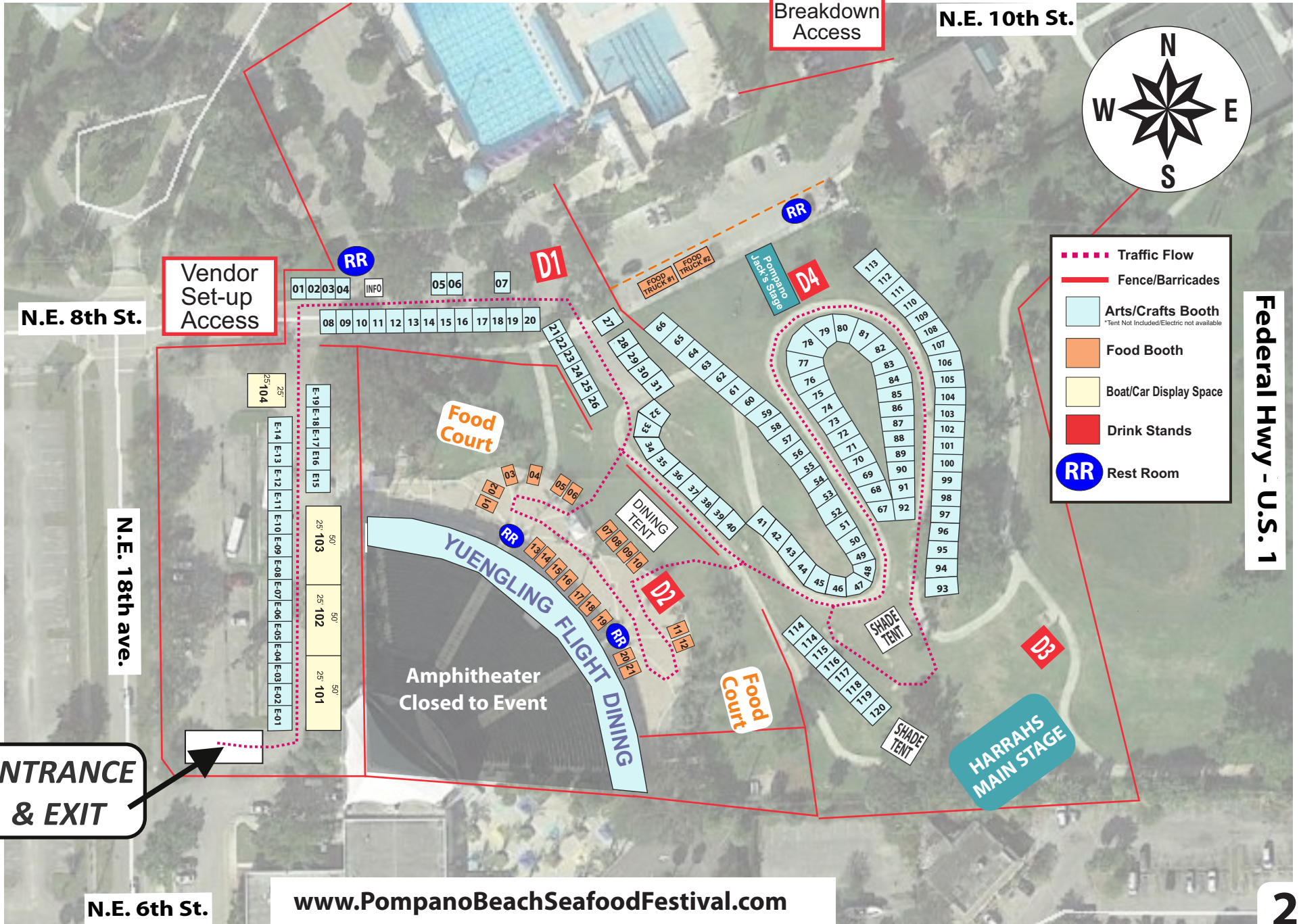
April 20-21  
2024

Seafood  
Festival

# POMPANO BEACH

Seafood  
Festival

38th Annual



**ENTRANCE & EXIT**

N.E. 6th St.

[www.PompanoBeachSeafoodFestival.com](http://www.PompanoBeachSeafoodFestival.com)

Federal Hwy - U.S. 1

ARTS & CRAFT VENDOR LIST	BOOTH LOCATION
3 BLIND MICE	B/049
3RD REEF LINE	E/19
A WORLD OF LEATHER & MORE	B/069, 070
AARP	B/021
ACRYFIN	B/025
ACUARELA JEWELRY	E/16
AI TO YOU	B/017
ALASKANS ART-N-AROUND	B/092
ALLVRING ENHANCEMENTS, LLC	B/040
AMERICAN BATH AND SHOWER	B/059
APEX LIGHTING, INC.	B/048
APPAREL 4 U INC.	B/031,032
AS BRAZILIAN BEACHWEAR	B/003
ASTROLOGY AND SPIRITUAL CARE	B/084
BAJIO SUNGLASSES	B/077
BELLA'S CHAKRA SHOP	B/063
BGHATS	B/037
BMK GOLF CARTS	B/107-111
BOPBE	B/052
BROWARD COUNTY PROPERTY APPRAISER	E/04
BUTTERFLIES 4 YOU	B/073
CAMP OUT, INC.	B/101-106
CAPITAL VACATIONS	B/044
CASTAWAY COFFEE	B/094
CLARKE BOWMAN PHOTOGRAPHY	B/036
COCONUT CRITTERS	B/066
COPB JR. LIFEGUARDS	E/01
CORK CULTURE	B/026
COTTON CANDY AND KIDS	B/004
CUTCO	B/067
DEAD FISH HOOK	B/087,088
DENIM LOVE	B/009
DESIGNER SPECIALTIES	B/117,118
DESIGNER SUNGLASSES	B/083
ENTIRELAZOS HAND LOVE	B/068
FATHER OF SEVEN, LLC	B/055
FLORIDA BLUE	B/065
FOTOS BY CATHERINE	B/053,054
FOUTAZ	B/041,042

ARTS & CRAFT VENDOR LIST	BOOTH LOCATION
FRIGATE & FERN	B/096
GEMMA MICHELLI	B/057
HEARNALEZ FREEZE DRIED CANDY	B/001
HELLO TREASURES STORE	B/075
HILLSBORO LIGHTHOUSE PRES. SOCIETY	E/03
HOLIDAYS NETWORK GROUP	E/08
HOME GROWN HEALERS	B/121
HONEY	B/114
INTERSTELLAR FREEZE DRIED CREATIONS	B/091
JAJA	B/115,116
JAMIN JAM LLC	B/062
JIM'S METAL ART WORK	E/13
JORDAN'S OUTDOOR FUN	B/099,100
JYPSEA LOCAL	B/050
K9 RESORTS	B/024
KANDALIA CO.	B/089, 090
KINKY EARRINGS	E/07
KNOTTY DAWG, THE	B/043
LEAF FILTER GUTTER PROTECTION	B/011
LEAFHOME WATER SOLUTIONS	B/010
LEGENDS URBAN WEAR	B/002
LOKATION REAL ESTATE	B/093
MARKEY SALES	B/022
MERMAID & ME	B/030
MIDGALIA	B/078
MISS BETH'S GROVES & GIFTS	B/046
NATURESTECH, INC.	B/018
NAUTI BY NATURE DESIGN	B/014
NAUTICAL SAND SCULPTURES	B/064
OCEAN FIRST INSTITUTE	B/060
OCTABLE	B/019
OK 4 U	B/061
ONE STOP HATS	B/012,013
ORANGE THEORY FITNESS	B/119
OUR BURNT OFFERINGS	B/033
PADDLERS MARKET	E/11
PARROTLAND	B/034
PINK PALACE	E/14
PINTS AND BARRELS CO.	B/112

ARTS & CRAFT VENDOR LIST	BOOTH LOCATION
POMPANO BEACH FIREFIGHTERS BENEVOLEN	E/02
POWER PLANT WELLNESS	B/008
PRESTIGE WINDOWS & DOORS	B/016
QUALIFIED CAPTAIN, THE	B/038,039
RAINBOW SHIMMER FAIRY HOUSES	B/071,072
REEL REBEL	B/076
REEL SKINZ	B/035
REEL TIME GEAR	B/020
REGGAE N THINGS	B/120
RICK & DEB'S	B/097
ROXYS ENCHANTED GIFTS	B/007
SALTY DAWGS, THE	B/051
SALTY HUNTRESS	E/12
SAMUEL PRESCOTT ASSOCIATED	B/085
SCOUT AND CELLAR	B/023
SHADE	B/047
SMOKEY'S LIFESTYLE CIGARS	B/113
SOUTH PACIFIC ISLAND ART	B/080
SPAIN CERMAICS	B/058
STEVE WHITLOCK GAME FISH ART, INC.	B/056
STONERS LIFE	B/074
STOVETOP YUM YUM, LLC	B/015
SUN IN COMFORT, INC.	B/081,082
TAMPA BAY ARTWEAR	B/005,006
TIAGO ART 17	B/027
TINGA TINGA	E/06
TOE WRANGLERS	B/098
TRENDY TOE RINGS	B/045
TROPICAL BREEZE	B/079
TRUE HONEY TEAS	B/028
WILDY BELLE	B/095
WYNDHAM VACATION OWNERSHIP, INC.	B/086
ZOE ALL OVER LLC	B/029